

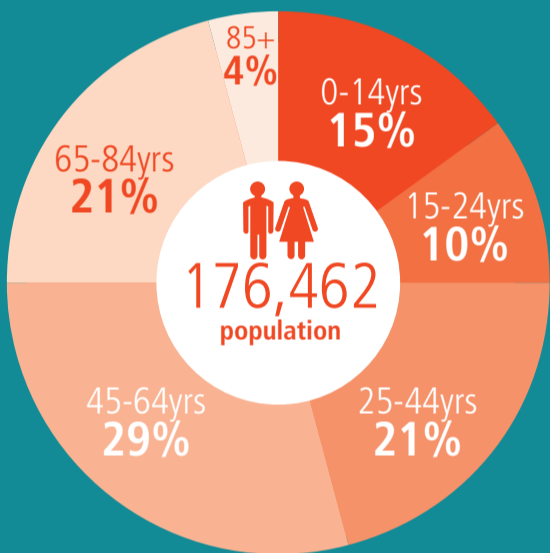
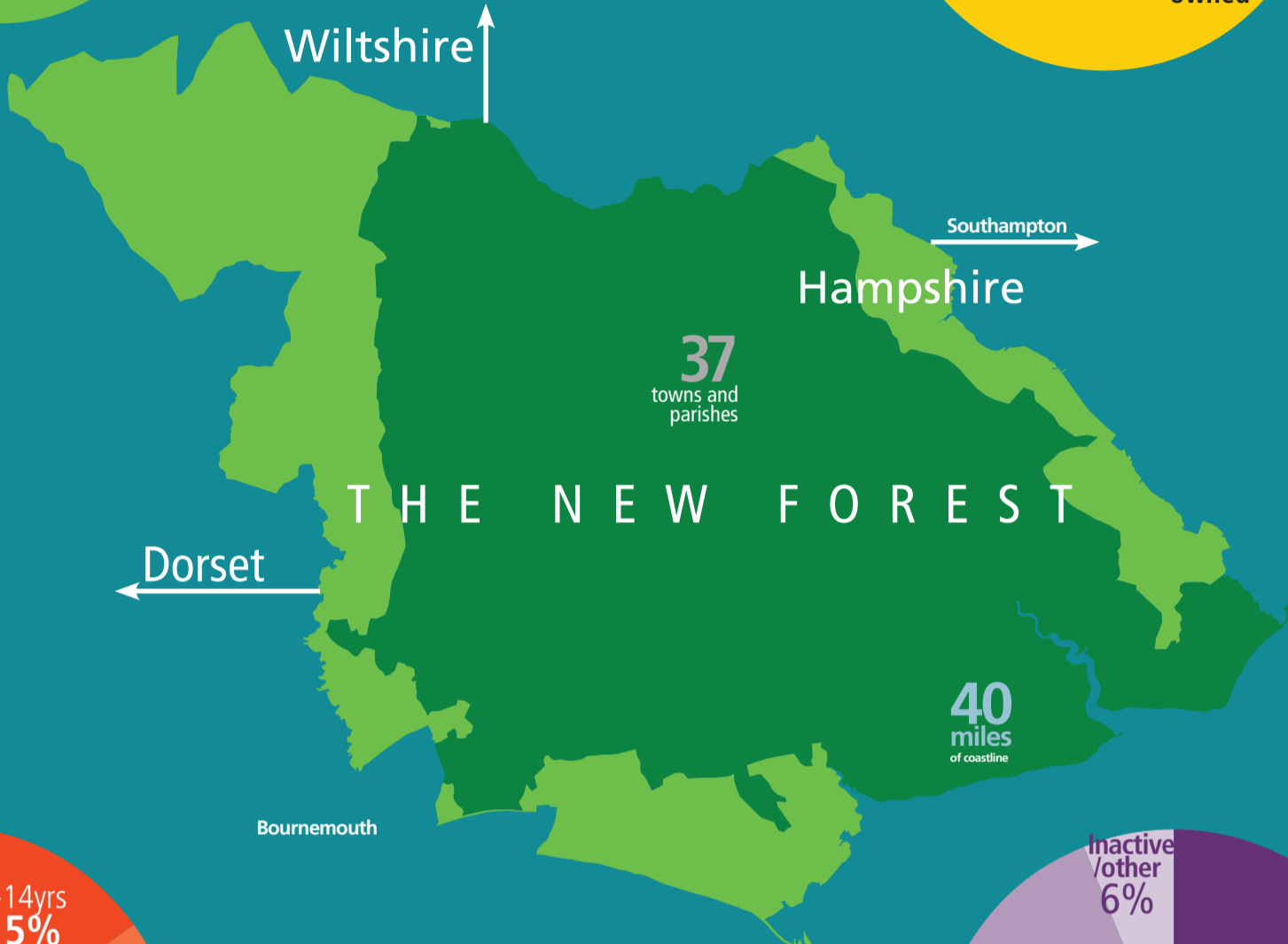
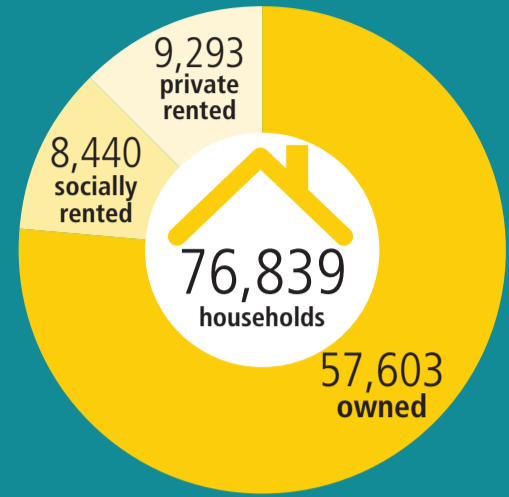
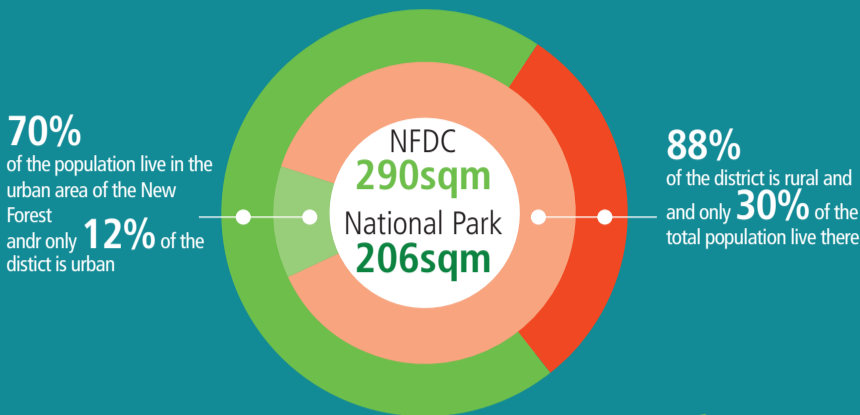
# Our corporate plan

2016 - 2020

New Forest District is a unique and special place, to live, work, visit, and enjoy

**DRAFT**

## OUR PLACE



## OUR PRIORITIES

### To secure a better future for the New Forest:

Delivering visible service outcomes valued by the community



Supporting local businesses to prosper for the benefit of the community



Enhancing outcomes through collaboration with other local organisations



Underpinned by effective and efficient management of our resources



## OUR VALUES

We will be **ambitious** in our desire to work for and with our local communities. We are **financially responsible** with the public funds made available to us and we will be **innovative** in how we improve outcomes for our community. We will be **collaborative** in our working, and are **proud** to work for and with others to represent the best interests of our unique and special place. We will be **open** in our approach and with our plans to deliver our aims and priorities.

You can read how we are delivering these aims in the Portfolio Delivery Plans [newforest.gov.uk](http://newforest.gov.uk)